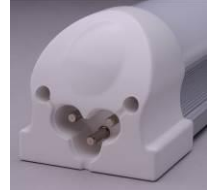
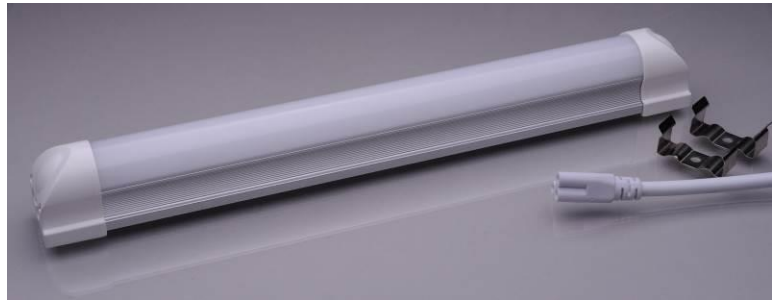


Indoor LED Lamp: Tube Lamp TL



- High efficiency LED Lamp
- 12V/24V DC LED driver
- Over temperature protection dimming
- LED life time >36,000 h
- Anodized AL tube with integrated reflector



TL series lamps are high lumen output, long life, reliable tube LED lamps for indoor lighting applications. Due to their advanced and unique over temperature protection, TL series lamps can withstand extreme conditions. Using high frequency switching LED driver technology, Zimpertec lamps provide excellent performance in light efficiency, lifetime and reliability.

Technical Data Tube Lamp					
	12V Types			12-24V Types	
Type	TL-12/03	TL-12/05	TL-12/10	TL-12-24/05	TL-12-24/10
Light Color +/-10%	Cool White 5700K	Cool White 5700K	Cool White 5700K	Cool White 5700K	Cool White 5700K
Power	3W (+/- 0.5W)	5W (+/- 0.5W)	10W (+/-0,7W)	5W (+/- 0.5W)	10W (+/-0,7W)
Current @12V	0.25A	0.42A	0.84A	0.21A	0.42A
Lumen output (lm)	360	600	1200	600	1200
Luminous efficiency Lm/W (+/-10%)	120	120	120	120	120
Voltage	11...20V DC			11...30V	11...30V
Length/Diameter	293/25mm		543/25mm	293/25mm	543/25mm
Ra (CRI)	>80%				
Working Temperature	-20...+50°C				
LED lifetime	>36,000h (L70)				
IP Rating	IP30				
Humidity	<95% non-condensing				
Socket	Terminal with +/- wire connection				
All performance values valid at 12VDC and 25°C ambient temperature WW: warm white (on request only)					